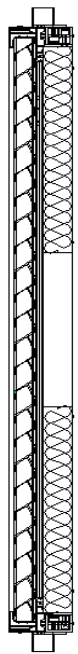
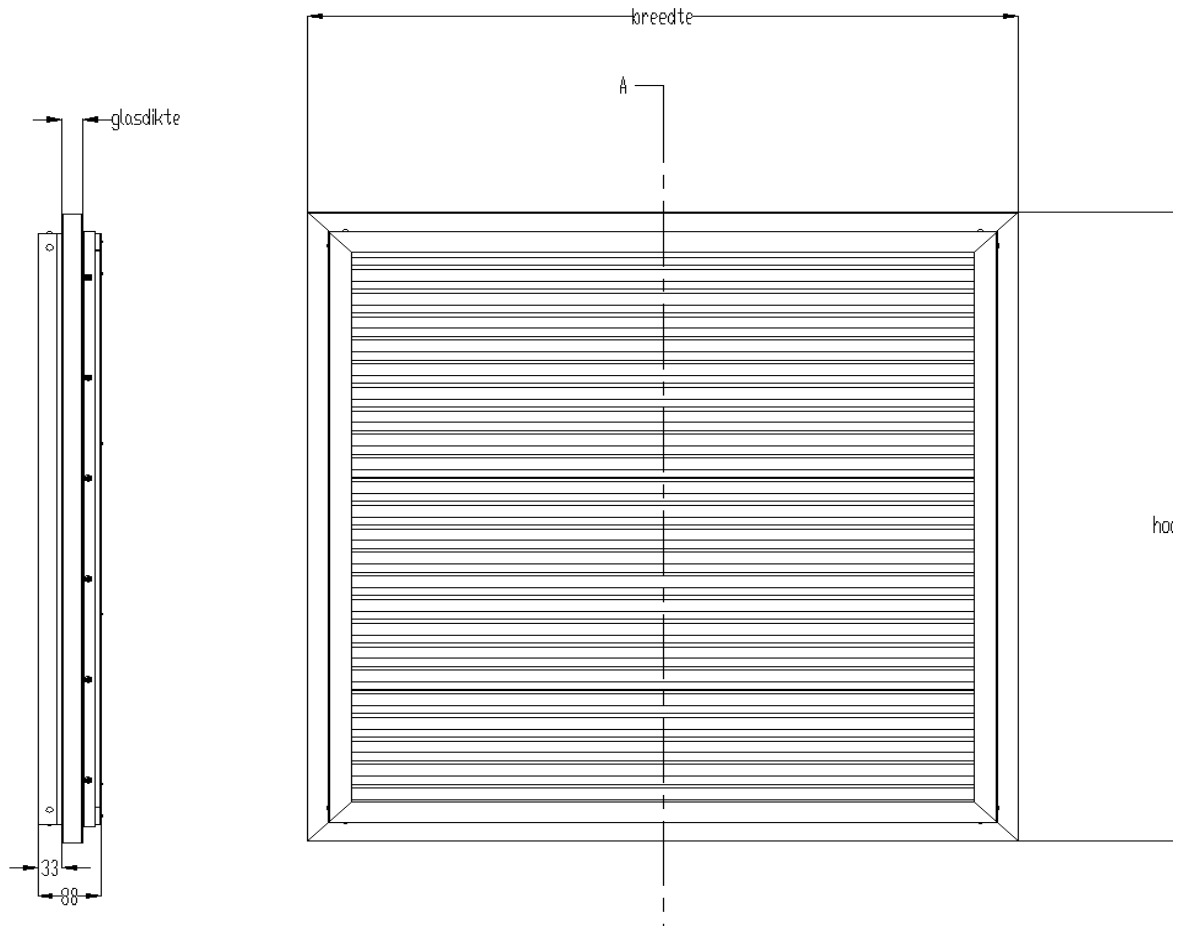


# TECHNICAL DATA SHEET



<b>TYPE</b>	<b>DUCOGRILLE SOLID ISO F30Z</b>
<b>DESCRIPTION</b>	Thermal insulated glazed inn-louvre, built-in situation into aluminium, wood or PVC
<b>SHAPE OF THE BLADE</b>	DGS 30Z
<b>VISUAL FREE AREA</b>	P1: 60% P2: 86%
<b>PHYSICAL FREE AREA</b>	P1: 34% P2: 48%
<b>BLADE PITCH</b>	37,5 mm
<b>GLAZING THICKNESS</b>	24/28/32/36/40/44/48
<b>FRAME THICKNESS</b>	88 mm (thermally broken)
<b>FRAME HEIGHT</b>	Min. 300mm, Max. 2500mm if width < 1250mm
<b>FRAME WIDTH</b>	Min. 300mm, Max. 2500mm if height < 1250mm
<b>PLENUM CONNECTION</b>	round plenum: maximum smallest dimension for length or width - (2*63) rectangular plenum : height plenum: height louvre - (2*63) width plenum: width louvre - (2*63)
<b>U-VALUE</b>	0,9 W/m²K
<b>MESH</b>	smalles punching (P1) or larger punching (P2)
<b>OPTION</b>	Burglar proof up to class 2
<b>MATERIAL</b>	Aluminium : Al Mg Si 0,5 Insulation : Akotherm Profile thickness: min. 1,5mm surface area : standard natural anodised (15-20µm) Treatment : Polyester powdercoated (60-80µm)
<b>COLOUR</b>	All ral colours

K-factor for P2	
suction:	12,85
exhaust:	12,9
K-factor for P1	
suction:	17,7
exhaust:	19,13



SECTION A-A'

