

Sliding folding door system

Sliding folding door system



The thermally broken folding door system is designed to allow for maximum through fare through an opening.

The system is built up using a frame in which movable parts or elements are placed in such a way that it is possible to fold up the elements to the left or to the right. These elements or sashes are supported and hinged to a mullion. At the bottom the mullion is supported by a roller mechanism. There are many possible combinations of elements and opening sashes.

Features:

- ✓ Polyamide Thermal Break for superior insulation.
- ✓ Security locking on main doors and intermediate stiles.
- ✓ Maximum sash weight up to 85 kgs.
- ✓ High performance weathering.
- ✓ Internally beaded.
- ✓ Virtually maintenance free.

Options:

- ✓ Opening inside or outside of the building.
- ✓ Accommodates glazing from 6mm to 36mm units and panels.
- ✓ Choice between standard cill or low cill profile allowing levelling of frame with floor.
- ✓ Accommodates many styles and opening options.
- ✓ Single or dual colour finishes.
- ✓ Slides left or right in opening.

Sliding folding door system

www.westendwindows.co.uk

Tel: 0117 966 7661

Applications:

The series of folding doors is mostly used in hotels and restaurants, stores and in private houses, in order to open a complete wall to create a larger space in the summer. The system is also interesting for conservatories to use as a screen you can open completely in summer times.

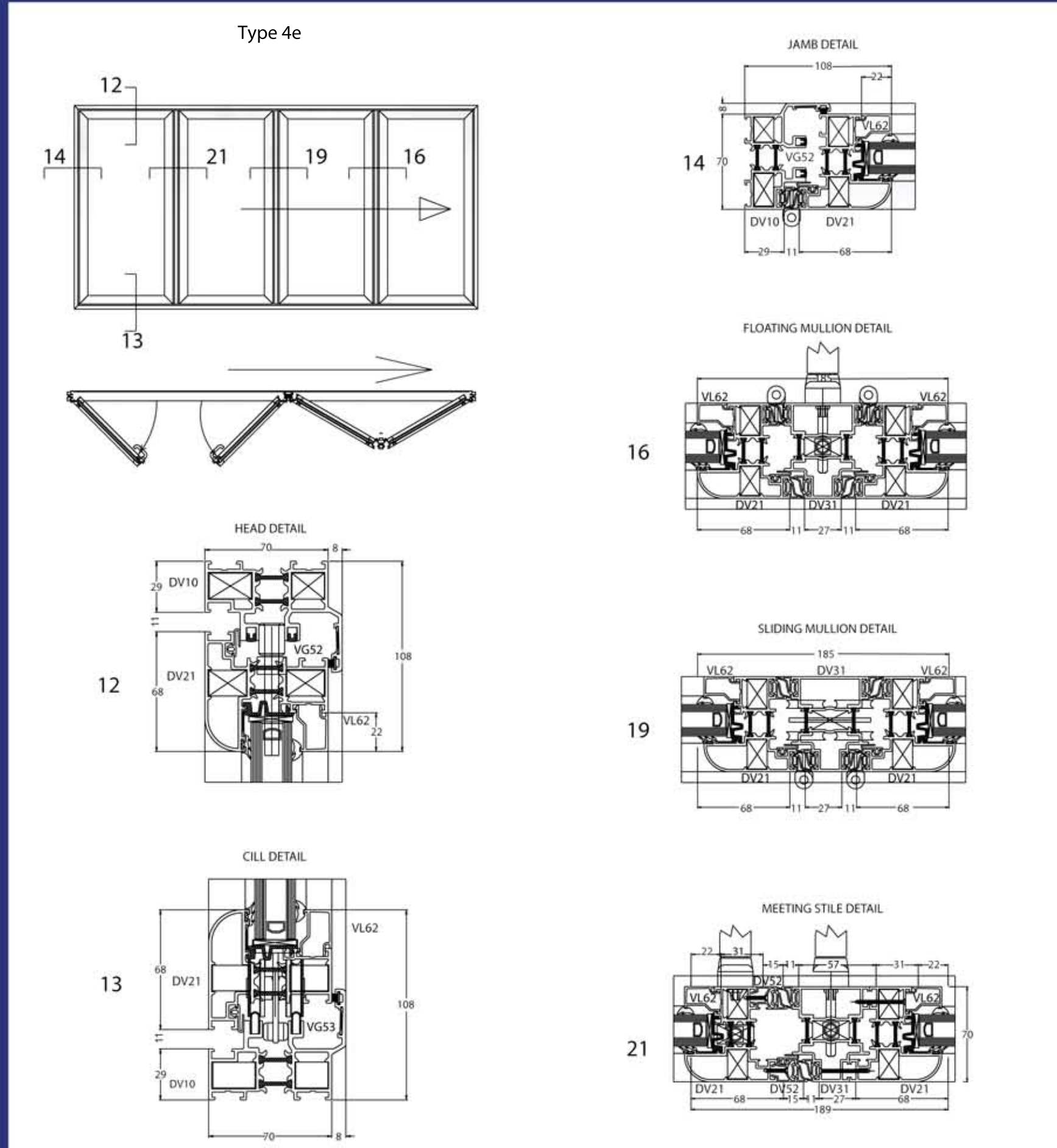
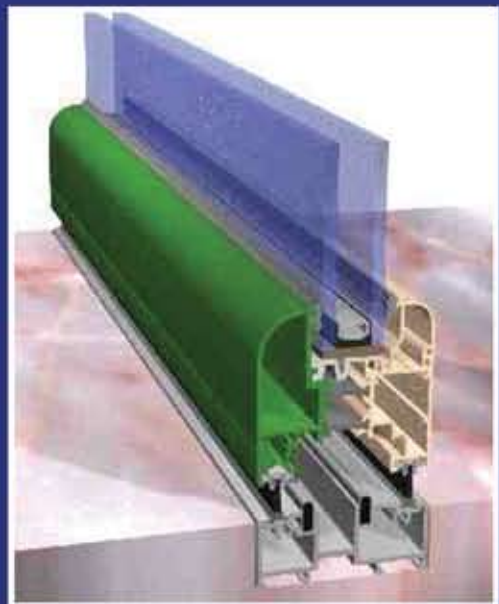
Materials:

Aluminium: AlMgSi 0.5 Type 6060/6063 T5 in condition F22 (according to NBN P21-001 and DIN7863, TV 110, NFP 85301, ISO 3994). Tested and approved according to an artificial ageing test of 'plexi glass' combined with vulcanised rubber.

Thermal break: polyamide strips PA 6.6.25% reinforced with glass fibre.

Finishing:

Electrostatic Powder Coating according to the guidelines of A.P.A-Quailcoat in most current RAL-colours. The composed profiles (with thermal break) can be coated with different inner and outer colours (Dual-Colour). Anodisation in satin or bronze colours with EWAA/EURAS-Qualinod quality label. Also available in wood structure finish to imitate different wood structures (powder coated according to Qualicoat standards)



Thermal Break:

The profiles consist of 2 aluminium extrusions which are separated from one another by polyamide strips PA 6.6.25 reinforced with glass fibre. A gluing thread, rolled and pushed in together with the thermal break profile ensures a strong after melting and flowing, when the profile are heated in the hardening furnace.

Performance level:

According to STS 52.0

Air transmission:	PA2
Mechanical resistance to wind:	PV2
Watertightness:	PE2

Details:

Built-in-depth:	outer frame 78mm
Sealings:	with extruded E.P.D.M. rubbers and P.P brushes
Glazing:	from 6mm to 38mm

