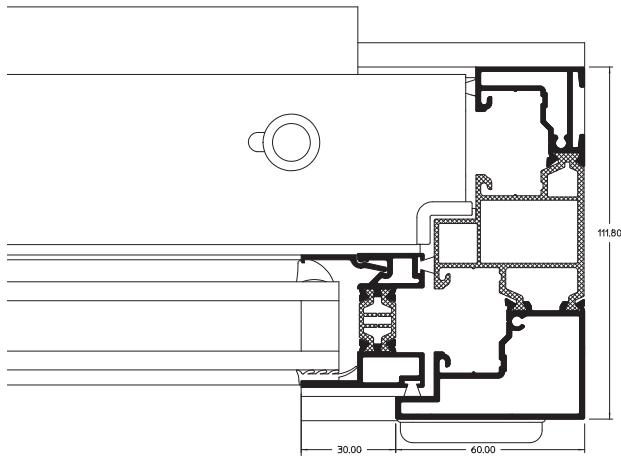


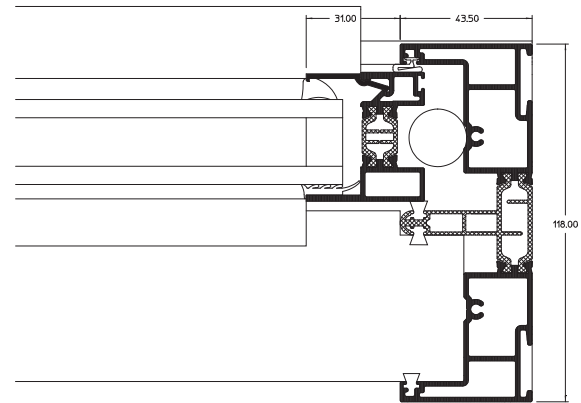
# Vertical Slider General Arrangements

## Upper Jamb



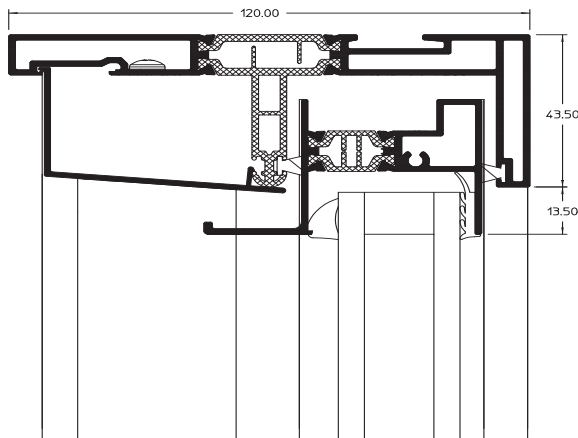
Tilt in vertical slider shown

## Lower Jamb



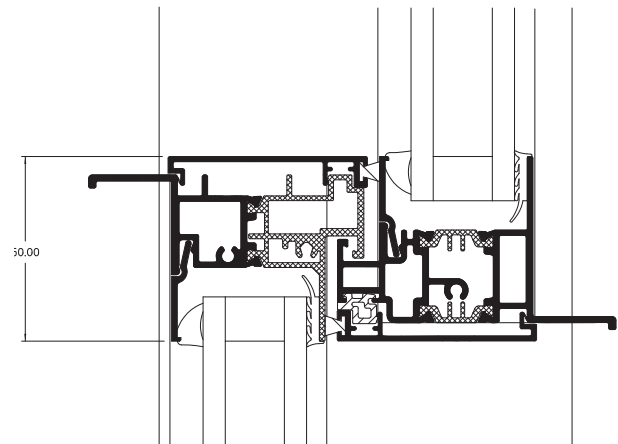
Straight vertical slider shown

## Head



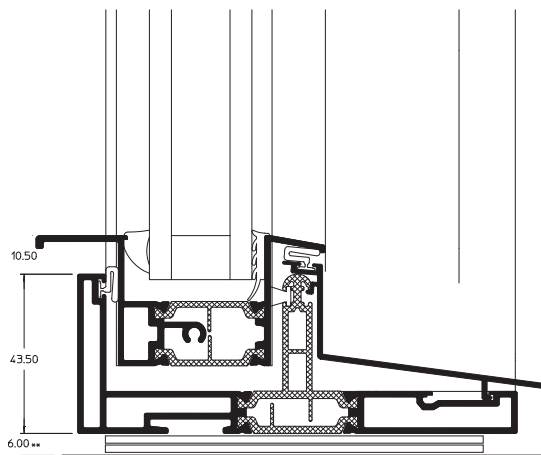
Straight and tilt in vertical slider

## Interlock



Straight and tilt in vertical slider

## Cill



Straight and tilt in vertical slider

# Size Limitations - Vertical Sliders

	600	900	1200	1500
1100	***	***	***	
1300	***	***	***	**
1500	***	***	**	**
1700	***	***	**	*
1900	***	**	**	*
2100	***	**	*	
2300	***	**	*	
2500	***	**	*	
2700	***	**	*	

\*\*\* = Spiralift / Ultralift / Torso

\*\* = Ultralift / Torso

\* = Torso only

## Note

All sizes given are in millimetres.

Sizes shown are to illustrate balance options.

Sash width must not exceed 2.5 times the sash height (see diagram alongside). Windows are supplied with Spiral, Ultralift or Torso balances depending on the sash weight :

Spiralift up to 18.0kg per sash, Ultralift up to 27.0kg per sash, Torso up to 40.0kg per sash. Note that the maximum sash weight for a tilt-in sash is 35kg.

Balance examples alongside are based on 4-16-4 glass construction, with equal sizes. Consideration must be given to any subcill condition that may affect the overall aluminium frame size.

